

# CLIMATE CHANGE AND FORESTS

Maine Summer Camps  
Winter Workshop  
January 29, 2025

Shane Duigan  
District Forester  
Maine Forest Service



MAINE DEPARTMENT OF  
**Agriculture, Conservation & Forestry**







MAINE DEPARTMENT OF  
**Agriculture, Conservation & Forestry**







MAINE DEPARTMENT OF  
**Agriculture, Conservation & Forestry**





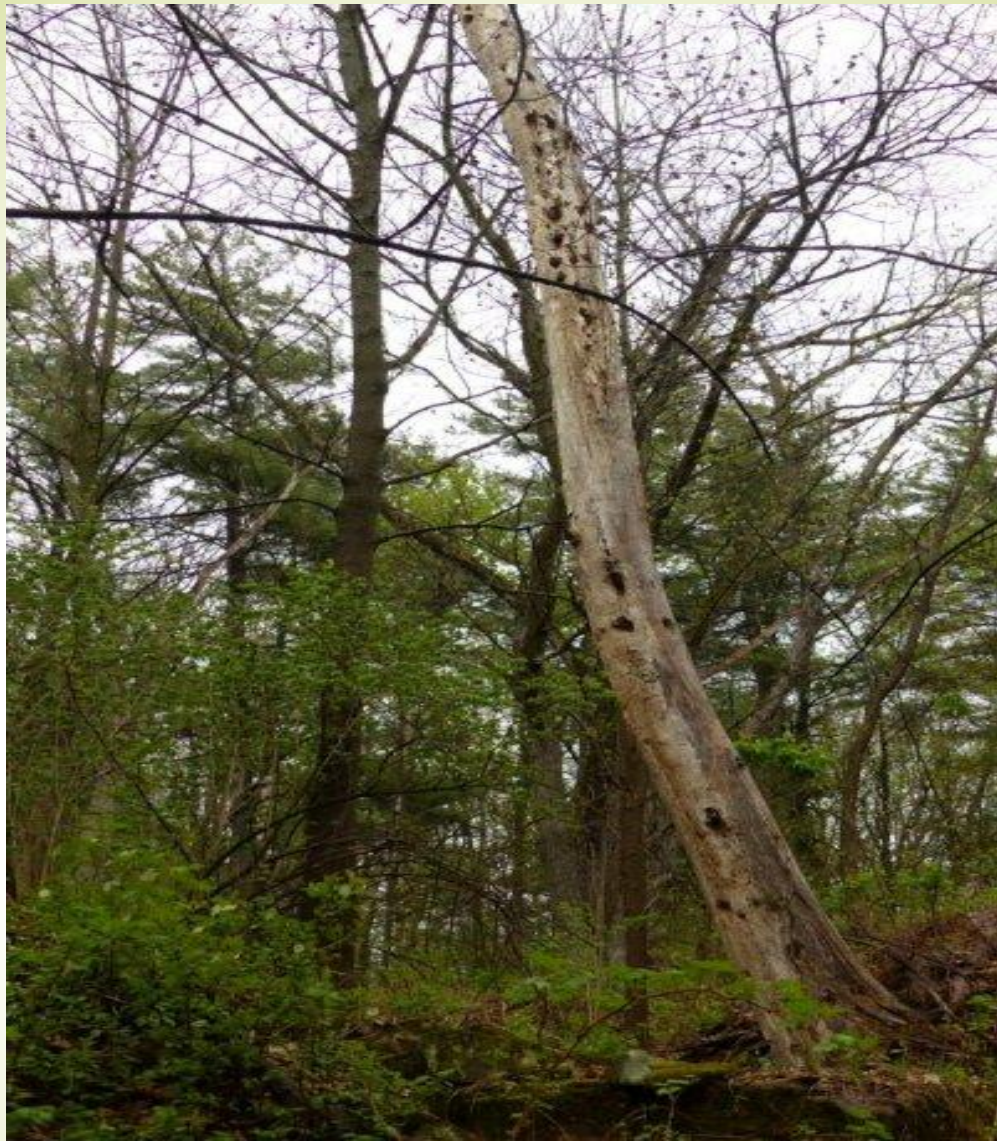
# INCREASED FREQUENCY AND INTENSITY OF STORMS



MAINE DEPARTMENT OF  
**Agriculture, Conservation & Forestry**





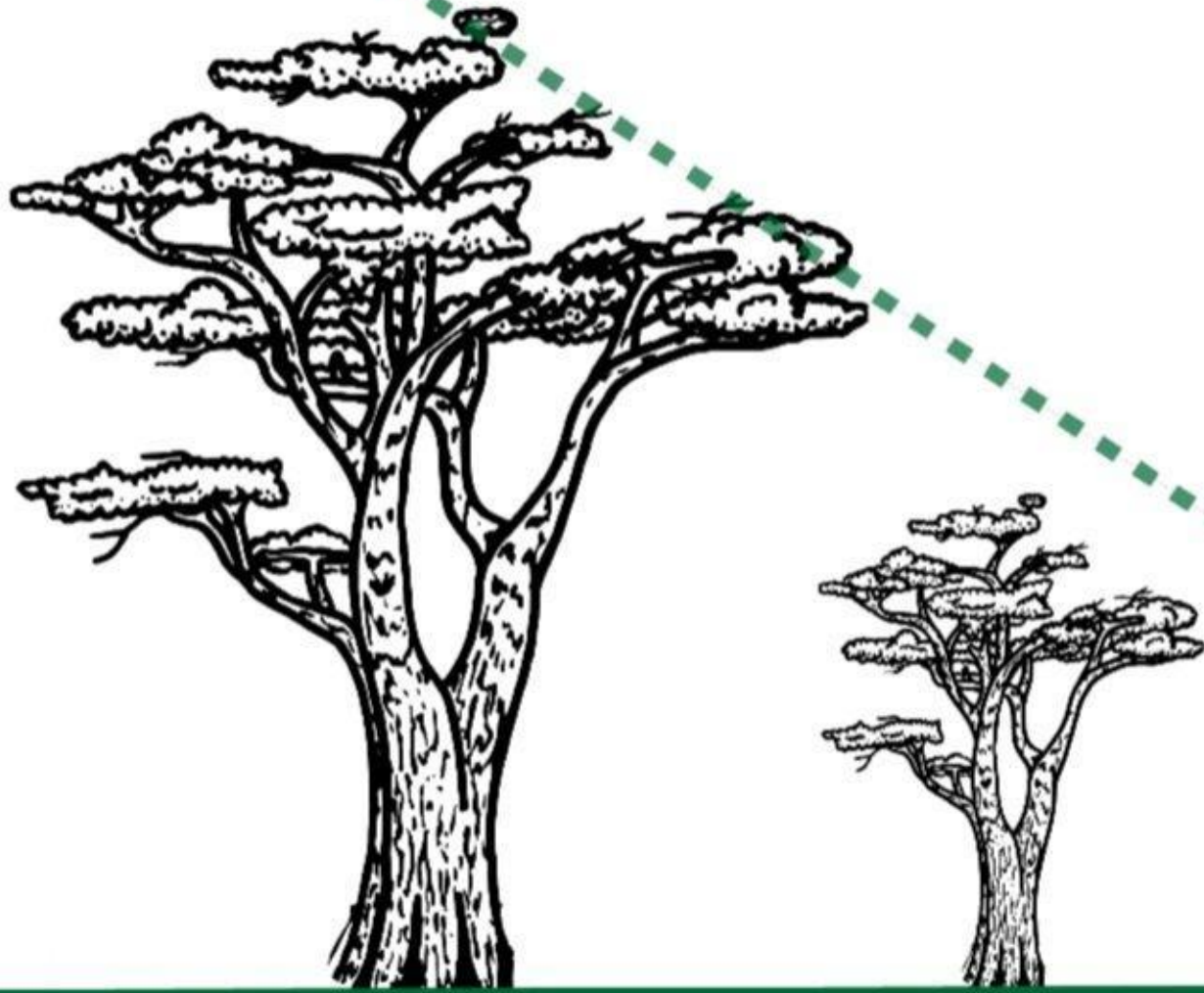


MAINE DEPARTMENT OF  
**Agriculture, Conservation & Forestry**





**HEIGHT**



**HAZARD TREE**  
**NOT A HAZARD TREE**

**1.5 x HEIGHT**



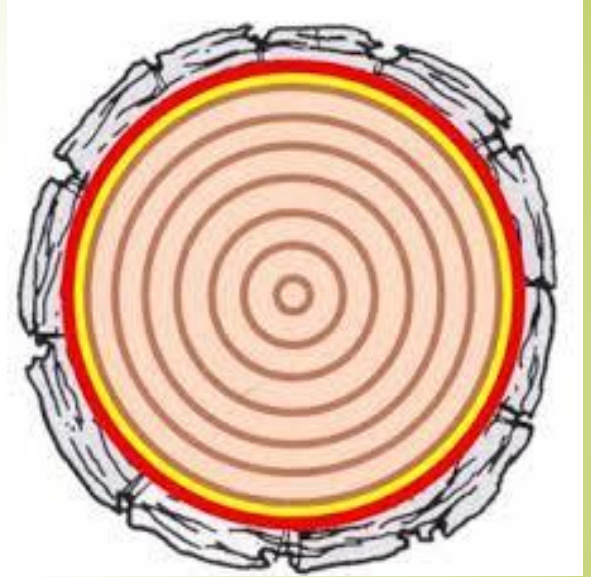




MAINE DEPARTMENT OF  
**Agriculture, Conservation & Forestry**







MAINE DEPARTMENT OF  
**Agriculture, Conservation & Forestry**







MAINE DEPARTMENT OF  
**Agriculture, Conservation & Forestry**







MAINE DEPARTMENT OF  
**Agriculture, Conservation & Forestry**







MAINE DEPARTMENT OF  
**Agriculture, Conservation & Forestry**







MAINE DEPARTMENT OF  
**Agriculture, Conservation & Forestry**







MAINE DEPARTMENT OF  
**Agriculture, Conservation & Forestry**







MAINE DEPARTMENT OF  
**Agriculture, Conservation & Forestry**





# FOREST COMPOSITION





MAINE DEPARTMENT OF  
**Agriculture, Conservation & Forestry**







INVASIVE  
PLANT  
BINGO



ALL  
PLAY





MAINE DEPARTMENT OF  
**Agriculture, Conservation & Forestry**







MAINE DEPARTMENT OF  
**Agriculture, Conservation & Forestry**







MAINE DEPARTMENT OF  
**Agriculture, Conservation & Forestry**







MAINE DEPARTMENT OF  
**Agriculture, Conservation & Forestry**







MAINE DEPARTMENT OF  
**Agriculture, Conservation & Forestry**





# SO WHAT DO WE DO



MAINE DEPARTMENT OF  
**Agriculture, Conservation & Forestry**





# MAKE A PLAN

Forest Management Plan  
\*Arborist

Goals

Forest Resilience



MAINE DEPARTMENT OF  
**Agriculture, Conservation & Forestry**





# FOREST RESILIENCE

The ability of a forest to adapt and recover from disturbance.

Increase Diversity

Species

Structural (horizontal and vertical)

Age Classes

Treatments



MAINE DEPARTMENT OF  
**Agriculture, Conservation & Forestry**





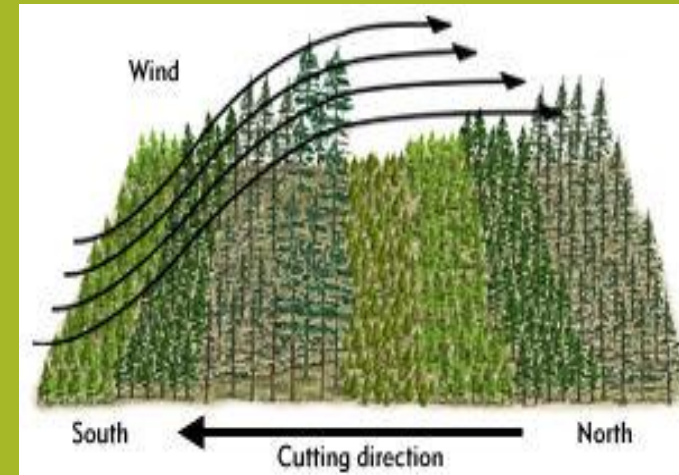
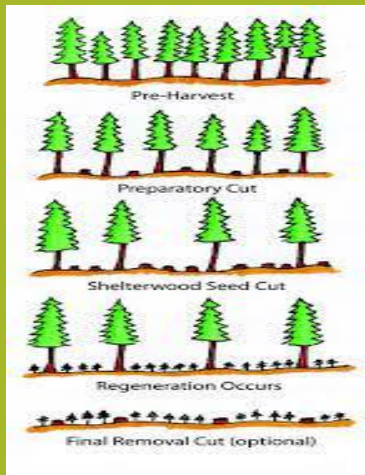
# TREATMENTS

For Reducing Wind Impact

## HARVEST PATTERNS

Uniform vs. Group Selection

Consider Prevailing Wind



MAINE DEPARTMENT OF  
**Agriculture, Conservation & Forestry**





# TREATMENTS

For Invasive Species

## Monitor for and Control Invasive Species



MAINE DEPARTMENT OF  
**Agriculture, Conservation & Forestry**





# TREATMENTS

For Wildfire Abatement

Fuel Management



MAINE DEPARTMENT OF  
**Agriculture, Conservation & Forestry**

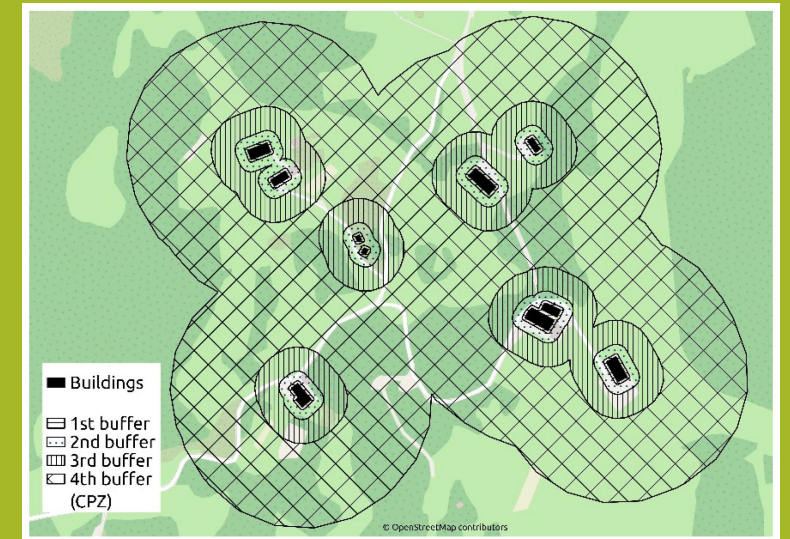
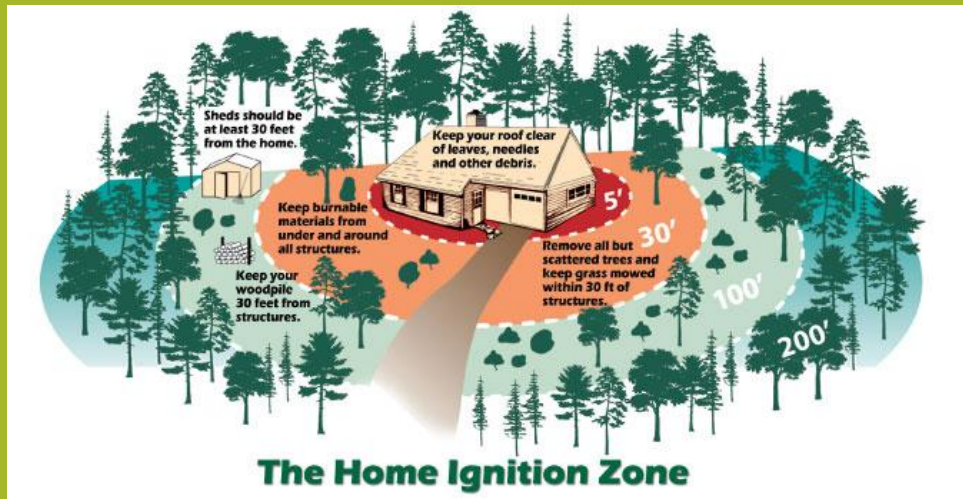




# TREATMENTS

For Wildfire Abatement

Wildland-Urban Interface WUI  
Management



MAINE DEPARTMENT OF  
**Agriculture, Conservation & Forestry**





# ASSISTANCE

## Maine Forest Service

- District Foresters
- Woodswise



-Environmental Quality  
Incentives Program (EQUIP)



MAINE DEPARTMENT OF  
**Agriculture, Conservation & Forestry**

